

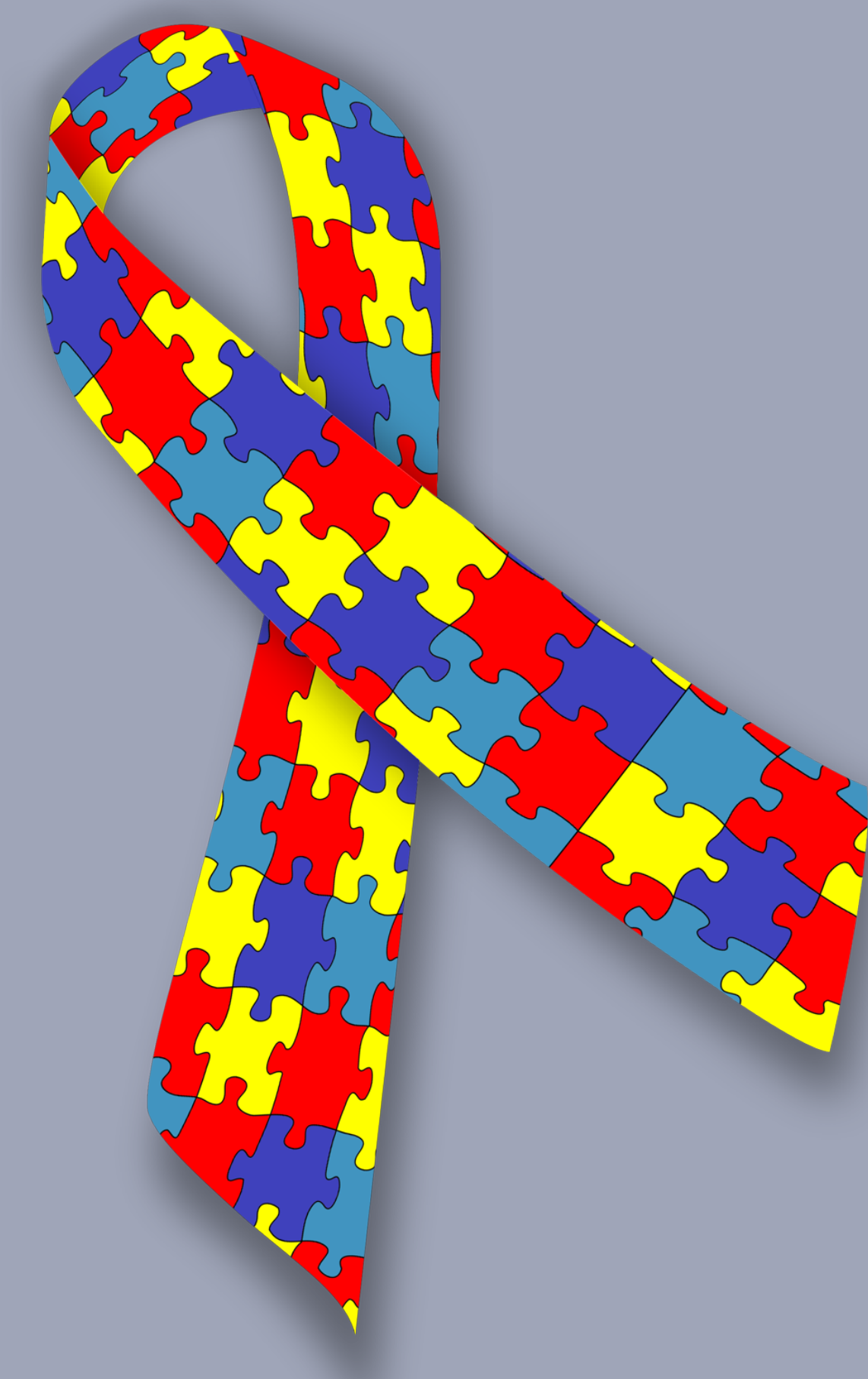


# The Amygdala and Autism

Melissa L. Sosa, University of Pennsylvania



## Background



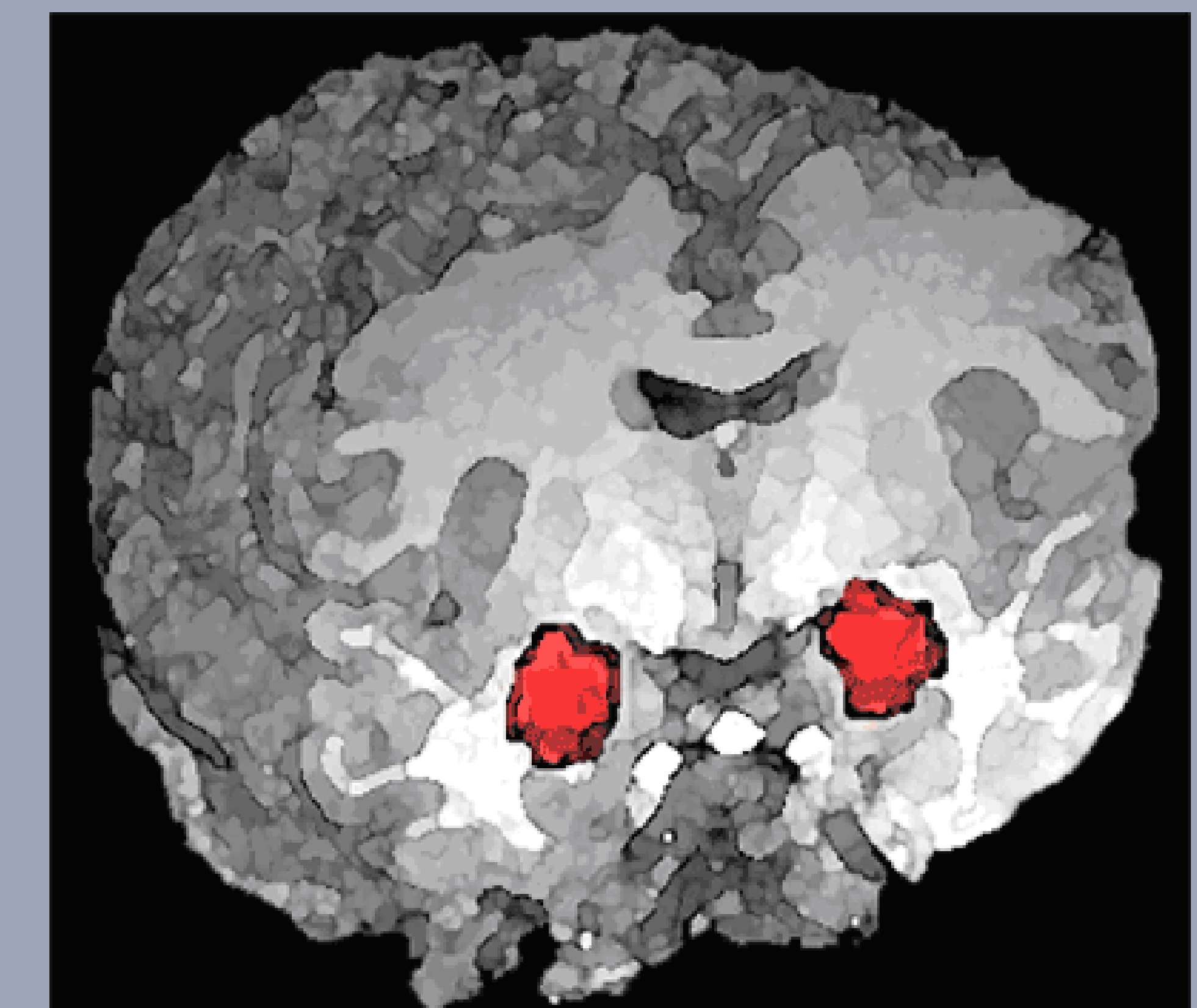
- Spectrum of disorders characterized by social and emotional deficiency
- The amygdala is related to the social and emotional deficits in autism.
- Strong debate over the effect of the volume of the amygdala.

## Question

What is the relationship between amygdala volume and the social and emotional symptoms (e.g. social withdrawal and anxiety) of autism spectrum disorders?



## Methodology



- Tracing amygdala from MRI scans using computer software
- Run statistical analysis using linear models
- Compare amygdala volume to results of social and emotional deficiency diagnostic tools